

NATIONAL PRECISION BEARING



NU & NX

Self-lubricating & Prelubricated Bearings

Flanged Bearings and Washers



Global Solutions on a National Level

NU & NX

Self-lubricating & Prelubricated Bearings



Global Solutions on a National Level



CONTENTS

Properties & Part Number Example	Page 1
NU INCH	
NU Bearings - Up to 2 Inch Bore.....	Page 2
NU Flanged Bearings.....	Page 3
NU Bearings - Over 2 Inch Bore.....	Page 4 & 5
NU Thrust Washers	Page 5
NU METRIC	
NU Bearings - Up to 45mm Bore	Page 6
NU Flanged Bearings.....	Page 7
NU Bearings - Over 45mm Bore.....	Page 8
NU Thrust Washers	Page 9
NX INCH	
NX Bearings	Page 10
NX Thrust Washers	Page 11
NX METRIC	
NX Bearings - Up to 110mm Bore	Page 12
NX Bearings - Over 110mm Bore	Inside back cover
NX Thrust Washers	Inside back cover



Prelubricated Bearings



Stainless Steel Bearings



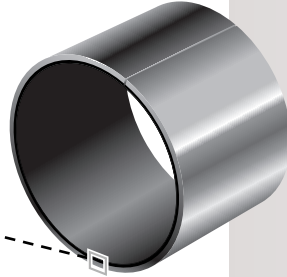
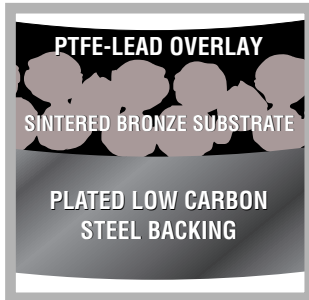
Solid Lubricant Inlaid Bearings

Warranty, Errors & Omissions
 National Precision Bearing Group of Mechatronics, Inc. assumes no responsibility for errors or omissions in this catalog. National Precision Bearing Group reserves the right to change information or specifications without notice. Application and use of this product is the sole responsibility of the user, however our engineering personnel will advise you of guidelines for the proper parameters of use of the product. National Precision Bearing Group warrants the product to be free from defects in materials and workmanship only. Sellers only obligation hereunder is to either repair or replace the defective product or work within 12 months of product delivery to our customers. No other warranties are expressed or implied in fact or by law. National Precision Bearing Group is not liable for associated costs of work done by the buyer involving our product, or altered product.



PROPERTIES

NU Self-lubricating



Loads - P

- Dynamic loads up to 20,000 PSI
- Static loads up to 36,000 PSI
- Compressive yield strength of 44,000 PSI

Speed - V

- Up to 1000 FPM unlubricated
- Up to 2000 FPM lubricated

Performance - PV

- PV to 50,000 PSI - FPM - continuous operation
- PV to 100,000 PSI - FPM - intermittent operation

Temperature Range

- -328°F to +536°F

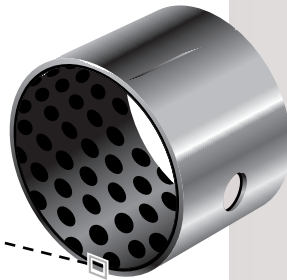
Coefficient of Friction

- 0.02 - 0.20 Static/Dynamic

Shaft Finish

- A surface finish of better than 16 micro inches is recommended
- Above 32 micro inches, bearing life is reduced by more than 50%

NX Prelubricated



Loads - P

- Dynamic loads up to 20,000 PSI
- Static loads up to 36,000 PSI
- Compressive yield strength of 44,000 PSI

Speed - V

- Up to 100 FPM greased
- Up to 500 FPM in oil

Performance - PV

- PV to 80,000 PSI - FPM - continuous operation

Temperature Range

- -40°F to +210°F intermittent to 260°F

Coefficient of Friction

- 0.015 - 0.15 Static
- 0.01 - 0.10 Dynamic

Shaft Finish

- A surface finish of better than 16 micro inches is recommended

PART NUMBER EXAMPLE

Inch

1 1 2	NU	80	
BORE	TYPE	LENGTH	IN 1/16 INCH
			NU or NX = Inch Bearing FNU = Flanged Inch Bearing
			IN 1/16 INCH

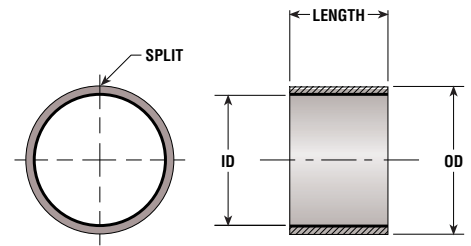
Examples: **112 NU 80** = 7 inch x 5 inch NU Bearing
24 FNU 32 = 1 1/2 inch x 2 inch NU Flanged Bearing

Metric

MB	150	100	NX
TYPE	BORE	LENGTH	IN MM
			IN MM
			MB = Metric Bearing FMB = Flanged Metric Bearing

Examples: **MB 150 100 NX** = 150 mm x 100 mm NX Bearing
FMB 06 04 NU = 6 mm x 4 mm NU Flanged Bearing

NU INCH Up to 2" Bore



NOMINAL BEARING BORE	RECOMMENDED		INSTALLED BEARING ID*	BEARING LENGTH	PART NUMBER	BEARING LENGTH	PART NUMBER	BEARING LENGTH	PART NUMBER	BEARING LENGTH	PART NUMBER	BEARING LENGTH	PART NUMBER		
	SHAFT DIA	HOUSING DIA													
1/8	.1243	.1873	.1243	1/8	02NU02	3/16	02NU03								
	.1236	.1878	.1268												
5/32	.1554	.2186	.1556	5/32	025NU025	1/4	025NU04								
	.1547	.2191	.1581												
3/16	.1865	.2497	.1867	3/16	03NU03	1/4	03NU04	3/8	03NU06						
	.1858	.2503	.1893												
1/4	.2490	.3122	.2492	1/4	04NU04	3/8	04NU06								
	.2481	.3128	.2518												
5/16	.3115	.3747	.3117	3/8	05NU06	1/2	05NU08								
	.3106	.3753	.3143												
3/8	.3740	.4684	.3742	3/16	06NU03	1/4	06NU04	3/8	06NU06	1/2	06NU08	5/8	06NU10	3/4	06NU12
	.3731	.4691	.3769												
7/16	.4365	.5309	.4367	1/2	07NU08	3/4	07NU12								
	.4355	.5316	.4394												
1/2	.4990	.5934	.4992	1/4	08NU04	3/8	08NU06	1/2	08NU08	5/8	08NU10	3/4	08NU12	7/8	08NU14
	.4980	.5941	.5019												
9/16	.5615	.6559	.5617	3/8	09NU06	1/2	09NU08	5/8	09NU10	3/4	09NU12				
	.5605	.6566	.5644												
5/8	.6240	.7184	.6242	1/4	10NU04	1/2	10NU08	5/8	10NU10	3/4	10NU12	7/8	10NU14	1	10NU16
	.6230	.7192	.6270												
11/16	.6865	.7809	.6867	7/8	11NU14										
	.6855	.7817	.6895												
3/4	.7491	.8747	.7493	1/4	12NU04	3/8	12NU06	1/2	12NU08	5/8	12NU10	3/4	12NU12	1	12NU16
	.7479	.8755	.7525												
13/16	.8116	.9372	.8118	3/4	13NU12	1 1/8	13NU18								
	.8104	.9380	.8150												
7/8	.8741	.9997	.8743	1/4	14NU04	3/8	14NU06	3/4	14NU12	1	14NU16	1 1/4	14NU20		
	.8729	1.0005	.8775												
1	.9991	1.1247	.9993	3/8	16NU06	1/2	16NU08	3/4	16NU12	1	16NU16	1 1/4	16NU20	1 1/2	16NU24
	.9979	1.1255	1.0025												
1 1/8	1.1238	1.2808	1.1240	3/8	18NU06	5/8	18NU10	3/4	18NU12	1	18NU16				
	1.1226	1.2818	1.1278												
1 1/4	1.2488	1.4058	1.2490	3/8	20NU06	3/4	20NU12	7/8	20NU14	1	20NU16	1 1/4	20NU20	1 3/4	20NU28
	1.2472	1.4068	1.2528												
1 3/8	1.3738	1.5308	1.3740	3/4	22NU12	1	22NU16	1 1/2	22NU24	1 3/4	22NU28				
	1.3722	1.5318	1.3778												
1 1/2	1.4988	1.6558	1.4990	1/2	24NU08	1	24NU16	1 1/8	24NU18	1 1/4	24NU20	1 1/2	24NU24	2	24NU32
	1.4972	1.6568	1.5028												
1 5/8	1.6238	1.7808	1.6240	1	26NU16	1 1/2	26NU24								
	1.6222	1.7818	1.6278												
1 3/4	1.7487	1.9371	1.7489	1	28NU16	1 1/2	28NU24	2	28NU32						
	1.7471	1.9381	1.7535												
1 7/8	1.8737	2.0621	1.8739	3/4	30NU12	1	30NU16	2 1/4	30NU36						
	1.8721	2.0633	1.8787												
2	1.9987	2.1871	1.9989	1/2	32NU08	1	32NU16	1 1/2	32NU24	1 3/4	32NU28	2	32NU32	2 1/2	32NU40
	1.9969	2.1883	2.0037												

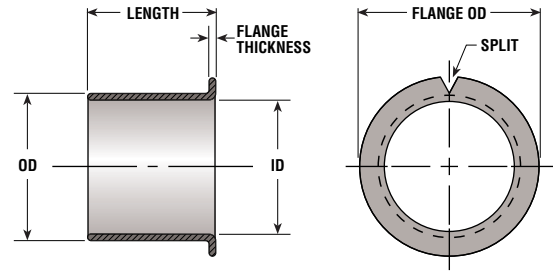
* When installed in a rigid steel or cast-iron housing

Length Tolerances: Up to and including 3/8 inch I.D. or length – ±0.015 inch. Above 3/8 inch I.D. or length – ±0.010 inch

Special Lengths: In addition to the lengths listed, NU bearings of over 2 inch I.D. or larger can be supplied in any desired length from 0.5 to 6 inches.

Special Diameters: NU bearings can be produced in any diameter 1/8 inch and over, and up to 6 inches in length. In addition, NU bearings with heavier or thinner walls than shown can be furnished.

NU INCH Flanged Bearings



NOMINAL BEARING BORE	RECOMMENDED		INSTALLED BEARING ID*	NOMINAL FLANGE OD	FLANGE THICKNESS	BEARING LENGTH	PART NUMBER	BEARING LENGTH	PART NUMBER	BEARING LENGTH	PART NUMBER	BEARING LENGTH	PART NUMBER
	SHAFT DIA	HOUSING DIA											
3/8	.3750	.4684	.3752 .3779	11/16	.052 .044	1/4	06FNU04	3/8	06FNU06	1/2	06FNU08	3/4	06FNU12
	.3740	.4691											
1/2	.5000	.5934	.5002 .5029	13/16	.052 .044	1/4	08FNU04	3/8	08FNU06	1/2	08FNU08	3/4	08FNU12
	.4990	.5941											
5/8	.6250	.7184	.6252 .6280	15/16	.052 .044	3/8	10FNU06	1/2	10FNU08	5/8	10FNU10	3/4	10FNU12
	.6240	.7192											
3/4	.7500	.8747	.7502 .7534	1 1/8	.068 .060	3/8	12FNU06	1/2	12FNU08	3/4	12FNU12	1	12FNU16
	.7488	.8755											
7/8	.8750	.9997	.8752 .8784	1 1/4	.068 .060	1/2	14FNU08	3/4	14FNU12	1	14FNU16	1 1/4	14FNU20
	.8738	1.0005											
1	1.0000	1.1247	1.0002 1.0034	1 3/8	.068 .060	1/2	16FNU08	3/4	16FNU12	1	16FNU16	1 1/4	16FNU20
	.9988	1.1255											
1 1/4	1.2500	1.4058	1.2502 1.2540	1 3/4	.083 .075	1	20FNU16	1 1/4	20FNU20	1 1/2	20FNU24		
	1.2484	1.4068											
1 1/2	1.5000	1.6558	1.5002 1.5040	2	.083 .075	1	24FNU16	1 1/2	24FNU24	2	24FNU32		
	1.4984	1.6568											
1 3/4	1.7500	1.9371	1.7502 1.7548	2 3/8	.098 .090	1	28FNU16	1 1/2	28FNU24	2	28FNU32		
	1.7484	1.9381											

* When installed in a rigid steel or cast-iron housing



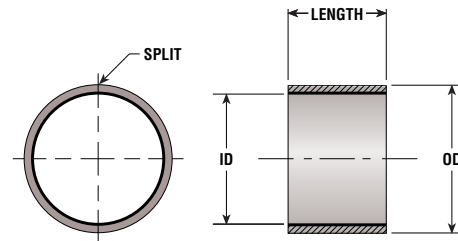
Tel: 800.426.8038

Fax: 425.222.5950

Email: sales@nationalprecision.com

www.nationalprecision.com

NU INCH Over 2" Bore



NOMINAL BEARING BORE	RECOMMENDED		INSTALLED BEARING ID*	BEARING LENGTH	PART NUMBER	BEARING LENGTH	PART NUMBER	BEARING LENGTH	PART NUMBER	BEARING LENGTH	PART NUMBER	BEARING LENGTH	PART NUMBER	BEARING LENGTH	PART NUMBER
	SHAFT DIA	HOUSING DIA													
2 1/8	2.1257 2.1239	2.3118 2.3130	2.1262 2.1326	3	34NU48										
2 1/4	2.2507 2.2489	2.4365 2.4377	2.2509 2.2573	1 3/4	36NU28	2	36NU32	2 1/2	36NU40	3	36NU48	3 1/2	36NU56	3 3/4	36NU60
2 1/2	2.5011 2.4993	2.6869 2.6881	2.5013 2.5077	1	40NU16	1 5/8	40NU26	2	40NU32	2 1/2	40NU40	3	40NU48	3 1/2	40NU56
2 3/4	2.7500 2.7482	2.9358 2.9370	2.7502 2.7566	2	44NU32	2 1/4	44NU36	2 1/2	44NU40	3	44DU48	3 1/2	44NU56	3 3/4	44NU60
2 7/8	2.8752 2.8734	3.0610 3.0623	2.8754 2.8819	2	46NU32	2 1/4	46NU36	2 1/2	46NU40	3	46NU48	3 1/2	46NU56	3 3/4	46NU60
3	3.0000 2.9982	3.1858 3.1872	3.0002 3.0068	2	48NU32	2 1/4	48NU36	2 1/2	48NU40	3	48NU48	3 1/2	48NU56	3 3/4	48NU60
3 1/4	3.2500 3.2480	3.4358 3.4372	3.2502 3.2568	2	52NU32	2 3/8	52NU38	2 1/2	52NU40	3	52NU48	3 1/2	52NU56	3 3/4	52NU60
3 1/2	3.5000 3.4978	3.6858 3.6872	3.5002 3.5068	2	56NU32	2 3/8	56NU38	2 1/2	56NU40	3	56NU48	3 1/2	56NU56	3 3/4	56NU60
3 5/8	3.6250 3.6228	3.8108 3.8122	3.6252 3.6318	2	58NU32	2 1/4	58NU36	2 1/2	58NU40	3	58NU48	3 1/2	58NU56	3 3/4	58NU60
3 3/4	3.7500 3.7478	3.9358 3.9372	3.7502 3.7568	2	60NU32	2 1/4	60NU36	2 1/2	60NU40	3	60NU48	3 1/2	60NU56	3 3/4	60NU60
4	4.0000 3.9978	4.1858 4.1872	4.0002 4.0068	2	64NU32	2 1/4	64NU36	2 1/2	64NU40	3	64NU48	3 1/2	64NU56	3 3/4	64NU60
4 1/4	4.2500 4.2478	4.4358 4.4372	4.2502 4.2568	2	68NU32	2 1/4	68NU36	2 1/2	68NU40	3	68NU48	3 1/2	68NU56	3 3/4	68NU60
4 3/8	4.3750 4.3728	4.5608 4.5622	4.3752 4.3818	2	70NU32	2 1/4	70NU36	2 1/2	70NU40	3	70NU48	3 1/2	70NU56	3 3/4	70NU60
4 1/2	4.5000 4.4978	4.6858 4.6872	4.5002 4.5068	2	72NU32	2 1/4	72NU36	2 1/2	72NU40	3	72NU48	3 1/2	72NU56	3 3/4	72NU60
4 3/4	4.7500 4.7475	4.9358 4.9374	4.7502 4.7572	2	76NU32	2 1/4	76NU36	2 1/2	76NU40	3	76NU48	3 1/2	76NU56	3 3/4	76NU60
5	4.9986 4.9961	5.1844 5.1860	4.9988 5.0056	2	80NU32	2 1/4	80NU36	2 1/2	80NU40	3	80NU48	3 1/2	80NU56	3 3/4	80NU60
5 1/4	5.2500 5.2475	5.4358 5.4374	5.2502 5.2570	2	84NU32	2 1/4	84NU36	2 1/2	84NU40	3	84NU48	3 1/2	84NU56	3 3/4	84NU60
5 1/2	5.5000 4.4975	5.6858 5.6874	5.5002 5.5070	2	88NU32	2 1/4	88NU36	2 1/2	88NU40	3	88NU48	3 1/2	88NU56	3 3/4	88NU60
5 3/4	5.7500 5.7475	5.9358 5.9374	5.7502 5.7570	2	92NU32	2 1/4	92NU36	2 1/2	92NU40	3	92NU48	3 1/2	92NU56	3 3/4	92NU60
6	6.0000 5.9975	6.1858 6.1874	6.0002 6.0070	2	96NU32	2 1/4	96NU36	2 1/2	96NU40	3	96NU48	3 1/2	96NU56	3 3/4	96NU60
6 1/4	6.2500 6.2475	6.4358 6.4374	6.2502 6.2570	2	100NU32	2 1/4	100NU36	2 1/2	100NU40	3	100NU48	3 1/2	100NU56	3 3/4	100NU60
6 1/2	6.5000 6.4975	6.6858 6.6874	6.5002 6.5070	2	104NU32	2 1/4	104NU36	2 1/2	104NU40	3	104NU48	3 1/2	104NU56	3 3/4	104NU60
6 3/4	6.7500 6.7475	6.9358 6.9374	6.7502 6.7570	2	108NU32	2 1/4	108NU36	2 1/2	108NU40	3	108NU48	3 1/2	108NU56	3 3/4	108NU60
7	6.9954 6.9929	7.1812 7.1830	6.9956 7.0026	2	112NU32	2 1/4	112NU36	2 1/2	112NU40	3	112NU48	3 1/2	112NU56	3 3/4	112NU60

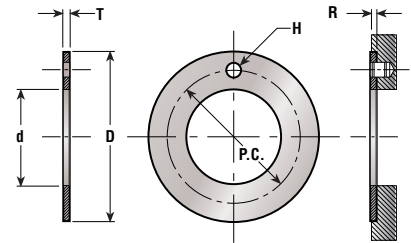
* When installed in a rigid steel or cast-iron housing

Length Tolerances: Up to and including 3/8 inch I.D. or length – ±0.015 inch. Above 3/8 inch I.D. or length – ±0.010 inch

Special Lengths: In addition to the lengths listed, NU bearings of over 2 inch I.D. or larger can be supplied in any desired length from 0.5 to 6 inches.

Special Diameters: NU bearings can be produced in any diameter 1/8 inch and over, and up to 6 inches in length. In addition, NU bearings with heavier or thinner walls than shown can be furnished.

NU INCH Thrust Washers



BEARING LENGTH	PART NUMBER	BEARING LENGTH	PART NUMBER	BEARING LENGTH	PART NUMBER	BEARING LENGTH	PART NUMBER
4	36NU64	4 1/2	36NU72				
3 3/4	40NU60	4	40NU64	4 1/2	40NU72	4 3/4	40NU76
4	44NU64	4 1/2	44NU72	4 3/4	44NU76	5	44NU80
4	46NU64	4 1/2	46NU72	4 3/4	46NU76	5	46NU80
4	48NU64	4 1/2	48NU72	4 3/4	48NU76	5	48NU80
4	52NU64	4 1/2	52NU72	4 3/4	52NU76	5	52NU80
4	56NU64	4 1/2	56NU72	4 3/4	56NU76	5	56NU80
4	58NU64	4 1/2	58NU72	4 3/4	58NU76	5	58NU80
4	60NU64	4 1/2	60NU72	4 3/4	60NU76	5	60NU80
4	64NU64	4 1/2	64NU72	4 3/4	64NU76	5	64NU80
4	68NU64	4 1/2	68NU72	4 3/4	68NU76	5	68NU80
4	70NU64	4 1/2	70NU72	4 3/4	70NU76	5	70NU80
4	72NU64	4 1/2	72NU72	4 3/4	72NU76	5	72NU80
4	76NU64	4 1/2	76NU72	4 3/4	76NU76	5	76NU80
4	80NU64	4 1/2	80NU72	4 3/4	80NU76	5	80NU80
4	84NU64	4 1/2	84NU72	4 3/4	84NU76	5	84NU80
4	88NU64	4 1/2	88NU72	4 3/4	88NU76	5	88NU80
4	92NU64	4 1/2	92NU72	4 3/4	92NU76	5	92NU80
4	96NU64	4 1/2	96NU72	4 3/4	96NU76	5	96NU80
4	100NU64	4 1/2	100NU72	4 3/4	100NU76	5	100NU80
4	104NU64	4 1/2	104NU72	4 3/4	104NU76	5	104NU80
4	108NU64	4 1/2	108NU72	4 3/4	108NU76	5	108NU80
4	112NU64	4 1/2	112NU72	4 3/4	112NU76	5	112NU80

PART NUMBER	INSIDE DIA +.010 d	OUTSIDE DIA -.010 D	THICKNESS +.0020 T	DOWEL HOLE		HOUSING RECESS DEPTH +.010 R
				DIA +.010 H	P.C. DIA -.010 P.C.	
W06NU	.500	.875	.0585	.067	.692	.040
W07NU	.562	1.000	.0585	.067	.786	.040
W08NU	.625	1.125	.0585	.099	.880	.040
W09NU	.687	1.187	.0585	.099	.942	.040
W10NU	.750	1.250	.0585	.099	1.005	.040
W11NU	.812	1.375	.0585	.099	1.099	.040
W12NU	.875	1.500	.0585	.130	1.192	.040
W13NU	.937	1.625	.0585	.130	1.286	.040
W14NU	1.000	1.750	.0585	.130	1.380	.040
W16NU	1.125	2.000	.0585	.161	1.567	.040
W18NU	1.250	2.125	.0585	.161	1.692	.040
W20NU	1.375	2.250	.0585	.161	1.817	.040
W22NU	1.500	2.500	.0585	.192	2.005	.040
W24NU	1.625	2.625	.0585	.192	2.130	.040
W26NU	1.750	2.750	.0585	.192	2.255	.040
W28NU	2.000	3.000	.0895	.192	2.505	.070
W30NU	2.125	3.125	.0895	.192	2.630	.070
W32NU	2.250	3.250	.0895	.192	2.755	.070



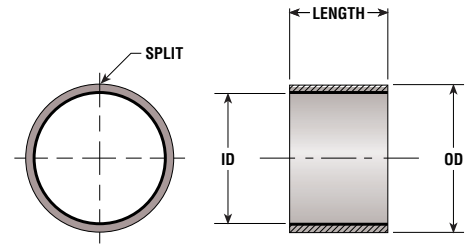
Tel: 800.426.8038

Fax: 425.222.5950

Email: sales@nationalprecision.com
www.nationalprecision.com

NU METRIC

Up to 45 mm Bore



NOMINAL BEARING BORE	RECOMMENDED		INSTALLED BEARING ID*	BEARING LENGTH	PART NUMBER	BEARING LENGTH	PART NUMBER	BEARING LENGTH	PART NUMBER	BEARING LENGTH	PART NUMBER	BEARING LENGTH	PART NUMBER		
	SHAFT DIA	HOUSING DIA													
2	2.000 1.994	3.500 3.508	2.000 2.048	3	MB 0203NU	5	MB 0205NU								
3	3.000 2.994	4.500 4.508	3.000 3.048	3	MB 0303NU	5	MB 0305NU	6	MB 0306NU						
4	4.000 3.992	5.500 5.508	4.000 4.048	3	MB 0403NU	4	MB 0404NU	6	MB 0406NU	10	MB 0410NU				
5	4.990 4.978	7.000 7.015	4.990 5.055	5	MB 0505NU	8	MB 0508NU	10	MB 0510NU						
6	5.990 5.978	8.000 8.015	5.990 6.055	6	MB 0606NU	8	MB 0608NU	10	MB 0610NU						
7	6.987 6.972	9.000 9.015	6.990 7.055	10	MB 0710NU										
8	7.987 7.972	10.000 10.015	7.990 8.055	8	MB 0808NU	10	MB 0810NU	12	MB 0812NU						
10	9.987 9.972	12.000 12.018	9.990 10.058	8	MB 1008NU	10	MB 1010NU	12	MB 1012NU	15	MB 1015NU	20	MB 1020NU		
12	11.984 11.966	14.000 14.018	11.990 12.058	8	MB 1208NU	10	MB 1210NU	12	MB 1212NU	15	MB 1215NU	20	MB 1220NU	25	MB 1225NU
13	12.984 12.966	15.000 15.018	12.990 13.058	10	MB 1310NU	20	MB 1320NU								
14	13.984 13.966	16.000 16.018	13.990 14.058	5	MB 1405NU	10	MB 1410NU	12	MB 1412NU	15	MB 1415NU	20	MB 1420NU	25	MB 1425NU
15	14.984 14.966	17.000 17.018	14.990 15.058	10	MB 1510NU	12	MB 1512NU	15	MB 1515NU	20	MB 1520NU	25	MB 1525NU		
16	15.984 15.966	18.000 18.018	15.990 16.058	10	MB 1610NU	12	MB 1612NU	15	MB 1615NU	20	MB 1620NU	25	MB 1625NU		
17	16.984 16.966	19.000 19.021	16.990 17.061	20	MB 1720NU										
18	17.984 17.966	20.000 20.021	17.990 18.061	15	MB 1815NU	20	MB 1820NU	25	MB 1825NU						
20	19.980 19.959	23.000 23.021	19.990 20.062	10	MB 2010NU	15	MB 2015NU	20	MB 2020NU	25	MB 2025NU	30	MB 2030NU		
22	21.980 21.959	25.000 25.021	21.990 22.071	15	MB 2215NU	20	MB 2220NU	25	MB 2225NU	30	MB 2230NU				
24	23.980 23.959	27.000 27.021	23.990 24.071	15	MB 2415NU	20	MB 2420NU	25	MB 2425NU	30	MB 2430NU				
25	24.980 24.959	28.000 28.021	24.990 25.071	15	MB 2515NU	20	MB 2520NU	25	MB 2525NU	30	MB 2530NU	50	MB 2550NU		
28	27.980 27.959	32.000 32.025	27.990 28.085	15	MB 2815NU	20	MB 2820NU	25	MB 2825NU	30	MB 2830NU				
30	29.980 29.959	34.000 34.025	29.990 30.085	15	MB 3015NU	20	MB 3020NU	25	MB 3025NU	30	MB 3030NU	40	MB 3040NU		
32	31.975 31.950	36.000 36.025	31.990 32.085	20	MB 3220NU	30	MB 3230NU	40	MB 3240NU						
35	34.975 34.950	39.000 39.025	34.990 35.085	20	MB 3520NU	30	MB 3530NU	35	MB 3535NU	40	MB 3540NU	50	MB 3550NU		
37	36.975 36.950	41.000 41.025	36.990 37.085	20	MB 3720NU										
40	39.975 39.950	44.000 44.025	39.990 40.085	20	MB 4020NU	30	MB 4030NU	40	MB 4040NU	50	MB 4050NU				
45	44.975 44.950	50.000 50.025	44.990 45.105	20	MB 4520NU	30	MB 4530NU	40	MB 4540NU	45	MB 4545NU	50	MB 4550NU		

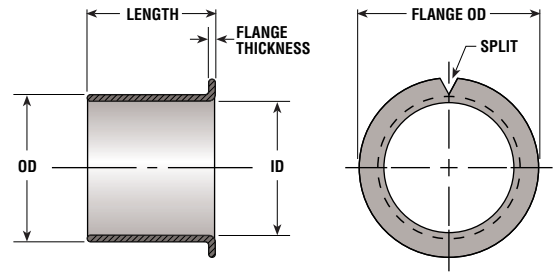
* When installed in a rigid steel or cast-iron housing

Length Tolerances: Up to and including 10 mm I.D. or length – ±0.38. Above 10 mm I.D. or length – ±0.25 mm.

Special Lengths: In addition to the lengths listed, NU bearings of over 50mm I.D. or larger can be supplied in any desired length from 13 to 150 mm.

Special Diameters: NU bearings can be produced in any diameter from 3 mm and over, and up to 150 mm in length. In addition, NU bearings with heavier or thinner walls than shown can be furnished.

NU METRIC Flanged Bearings



NOMINAL BEARING BORE	RECOMMENDED		INSTALLED BEARING ID*	NOMINAL FLANGE OD	FLANGE THICKNESS	BEARING LENGTH	PART NUMBER	BEARING LENGTH	PART NUMBER	BEARING LENGTH	PART NUMBER	BEARING LENGTH	PART NUMBER
	SHAFT DIA	HOUSING DIA											
6	5.990	8.000	5.990	12	1.00	4	FMB 0604NU	8	FMB 0608NU				
	5.978	8.015	6.055		.80								
8	7.987	10.000	7.990	15	1.00	5.5	FMB 0805.5NU	7.5	FMB 0807.5NU	9.5	FMB 0809.5NU		
	7.972	10.015	8.055		.80								
10	9.987	12.000	9.990	18	1.00	7	FMB 1007NU	9	FMB 1009NU	12	FMB 1012NU	17	FMB 1017NU
	9.972	12.018	10.058		.80								
12	11.984	14.000	11.990	20	1.00	7	FMB 1207NU	9	FMB 1209NU	12	FMB 1212NU	17	FMB 1217NU
	11.966	14.018	12.058		.80								
14	13.984	16.000	13.990	22	1.00	12	FMB 1412NU	17	FMB 1417NU				
	13.966	16.018	14.058		.80								
15	14.984	17.000	14.990	23	1.00	9	FMB 1509NU	12	FMB 1512NU	17	FMB 1517NU		
	14.996	17.018	15.058		.80								
16	15.984	18.000	15.990	24	1.00	12	FMB 1612NU	17	FMB 1617NU				
	15.966	18.018	16.058		.80								
18	17.984	20.000	17.990	26	1.00	12	FMB 1812NU	17	FMB 1817NU	22	FMB 1822NU		
	17.966	20.021	18.061		.80								
20	19.980	23.000	19.990	30	1.50	11.5	FMB 2011.5NU	16.5	FMB 2016.5NU	21.5	FMB 2021.5NU		
	19.959	23.021	20.062		1.30								
25	24.980	28.000	24.990	35	1.50	11.5	FMB 2511.5NU	16.5	FMB 2516.5NU	21.5	FMB 2521.5NU		
	24.959	28.021	25.071		1.30								
30	29.980	34.000	29.990	42	2.00	16	FMB 3016NU	26	FMB 3026NU				
	29.959	34.025	30.085		1.80								
35	34.975	39.000	34.990	47	2.00	16	FMB 3516NU	26	FMB 3526NU				
	34.950	39.025	35.085		1.80								
40	39.975	44.000	39.990	52	2.00	16	FMB 4016NU	26	FMB 4026NU				
	39.950	44.025	40.085		1.80								

* When installed in a rigid steel or cast-iron housing



Tel: 800.426.8038

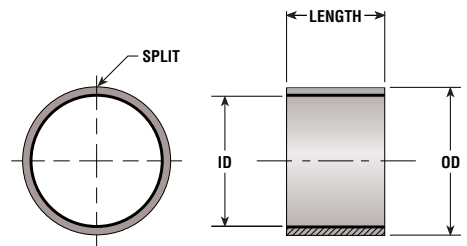
Fax: 425.222.5950

Email: sales@nationalprecision.com

www.nationalprecision.com

NU METRIC

Over 45 mm Bore



NOMINAL BEARING BORE	RECOMMENDED HOUSING		INSTALLED BEARING ID*	BEARING LENGTH	PART NUMBER	BEARING LENGTH	PART NUMBER	BEARING LENGTH	PART NUMBER	BEARING LENGTH	PART NUMBER	BEARING LENGTH	PART NUMBER
	SHAFT DIA	HOUSING DIA											
50	49.975	55.000	49.990	20	MB	30	MB	40	MB	50	MB	60	MB
	49.950	55.030	50.110		5020NU		5030NU		5040NU		5050NU		5060NU
55	54.970	60.000	54.990	20	MB	30	MB	40	MB	55	MB	60	MB
	54.940	60.030	55.110		5520NU		5530NU		5540NU		5555NU		5560NU
60	59.970	65.000	59.990	20	MB	30	MB	40	MB	60	MB	70	MB
	59.940	65.030	60.110		6020NU		6030NU		6040NU		6060NU		6070NU
65	64.970	70.000	64.990	30	MB	50	MB	70	MB				
	64.940	70.030	65.110		6530NU		6550NU		6570NU				
70	69.970	75.000	69.990	40	MB	50	MB	70	MB				
	69.940	75.030	70.110		7040NU		7050NU		7070NU				
75	74.970	80.000	74.990	60	MB	80	MB						
	74.940	80.030	75.110		7560NU		7580NU						
80	80.000	85.000	80.010	60	MB	100	MB						
	79.954	85.035	80.145		8060NU		80100NU						
85	85.000	90.000	85.010	30	MB	60	MB	100	MB				
	84.946	90.035	85.145		8530NU		8560NU		85100NU				
90	90.000	95.000	90.010	60	MB	100	MB						
	89.946	95.035	90.145		9060NU		90100NU						
95	95.000	100.000	95.010	60	MB	100	MB						
	94.946	100.035	95.145		9560NU		95100NU						
100	100.000	105.000	100.010	60	MB	115	MB						
	99.946	105.035	100.145		10060NU		100115NU						
105	105.000	110.000	105.010	60	MB	115	MB						
	104.946	110.035	105.145		10560NU		105115NU						
110	110.000	115.000	110.010	60	MB	115	MB						
	109.946	115.035	110.145		11060NU		110115NU						
115	115.000	120.000	115.010	50	MB	70	MB						
	114.946	120.035	115.145		11550NU		11570NU						
120	120.000	125.000	120.048	50	MB	60	MB	100	MB				
	119.946	125.040	120.220		12050NU		12060NU		120100NU				
125	125.000	130.000	125.048	100	MB								
	124.937	130.040	125.220		125100NU								
130	130.000	135.000	130.048	60	MB	100	MB						
	129.937	135.040	130.220		13060NU		130100NU						
135	135.000	140.000	135.048	60	MB	80	MB						
	134.937	140.040	135.220		13560NU		13580NU						
140	140.000	145.000	140.048	60	MB	100	MB						
	139.937	145.040	140.220		14060NU		140100NU						
150	150.000	155.000	150.048	60	MB	80	MB	100	MB				
	149.937	155.040	150.220		15060NU		15080NU		150100NU				
160	160.000	165.000	160.048	80	MB	100	MB						
	159.937	165.040	160.220		16080NU		160100NU						
180	180.000	185.000	180.048	100	MB								
	179.937	185.046	180.226		180100NU								
200	200.000	205.000	200.048	100	MB								
	199.928	205.046	200.226		200100NU								
210	210.000	215.000	210.048	100	MB								
	209.928	215.046	210.226		210100NU								
220	220.000	225.000	220.048	100	MB								
	219.928	225.046	220.226		220100NU								
250	250.000	255.000	250.048	100	MB								
	249.928	255.052	250.232		250100NU								
300	300.000	305.000	300.048	100	MB								
	299.919	305.052	300.232		300100NU								

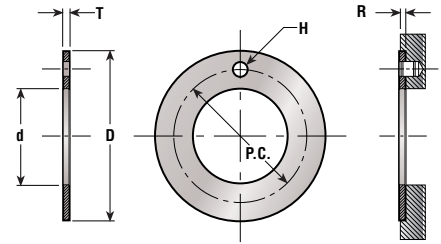
* When installed in a rigid steel or cast-iron housing

Length Tolerances: Up to and including 10 mm I.D. or length – ± 0.38 . Above 10 mm I.D. or length – ± 0.25 mm.

Special Lengths: In addition to the lengths listed, NU bearings of over 50mm I.D. or larger can be supplied in any desired length from 13 to 150 mm.

Special Diameters: NU bearings can be produced in any diameter from 3 mm and over, and up to 150 mm in length. In addition, NU bearings with heavier or thinner walls than shown can be furnished.

NU METRIC Thrust Washers



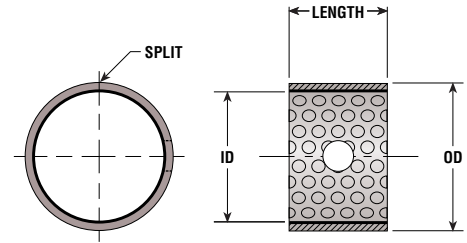
PART NUMBER	INSIDE DIA +.25 d	OUTSIDE DIA -.25 D	THICKNESS +.05 T	DOWEL HOLE		HOUSING RECESS DEPTH +.25 R
				DIA +.25 H	P.C. DIA -.24 P.C.	
MW08NU	10.00	20.00	1.45	—	—	.095
MW10NU	12.00	24.00	1.45	1.625	18.12	0.95
MW12NU	14.00	26.00	1.45	2.125	20.12	0.95
MW14NU	16.00	30.00	1.45	2.125	22.12	0.95
MW16NU	18.00	32.00	1.45	2.125	25.12	0.95
MW18NU	20.00	36.00	1.45	3.125	28.12	0.95
MW20NU	22.00	38.00	1.45	3.125	30.12	0.95
MW22NU	24.00	42.00	1.45	3.125	33.12	0.95
MW24NU	26.00	44.00	1.45	3.125	35.12	0.95
MW25NU	28.00	48.00	1.45	4.125	38.12	0.95
MW30NU	32.00	54.00	1.45	4.125	43.12	0.95
MW35NU	38.00	62.00	1.45	4.125	50.12	0.95
MW40NU	42.00	66.00	1.45	4.125	54.12	0.95
MW45NU	48.00	74.00	1.95	4.125	61.12	1.45
MW50NU	52.00	78.00	1.95	4.125	65.12	1.45
MW60NU	62.00	90.00	1.95	4.125	76.12	1.45



Tel: 800.426.8038
 Fax: 425.222.5950
 Email: sales@nationalprecision.com
 www.nationalprecision.com

NX INCH

Up to 3" Bore



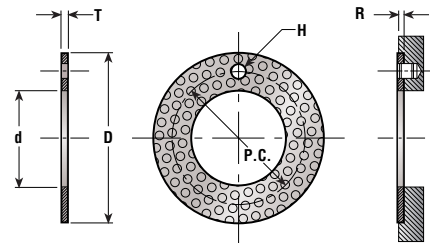
NOMINAL BEARING BORE	RECOMMENDED		INSTALLED BEARING ID	BEARING LENGTH	PART NUMBER	BEARING LENGTH	PART NUMBER	BEARING LENGTH	PART NUMBER	BEARING LENGTH	PART NUMBER
	SHAFT DIA	HOUSING DIA									
1/2	.5000	.6345	.5007	3/8	08NX06	1	08NX08				
	.4990	.6352									
5/8	.6250	.7596	.6258	5/8	10NX10	1	10NX12				
	.6240	.7604									
3/4	.7500	.8846	.7508	3/4	12NX12	1	12NX16				
	.7488	.8854									
7/8	.8750	1.0097	.8759	3/4	14NX12	1	14NX16				
	.8738	1.0105									
1	1.0000	1.1348	1.0010	3/4	16NX12	1	16NX16				
	0.9988	1.1356									
1 1/8	1.1250	1.2598	1.1260	3/4	18NX12	1	18NX16				
	1.1238	1.2606									
1 1/4	1.2500	1.4160	1.2512	3/4	20NX12	1	20NX16				
	1.2484	1.4170									
1 3/8	1.3750	1.5410	1.3762	1	22NX16	2	22NX24				
	1.3734	1.5420									
1 1/2	1.5000	1.6660	1.5012	1	24NX16	2	24NX24	2	24NX32		
	1.4984	1.6670									
1 5/8	1.6250	1.7910	1.6262	1	26NX16	2	26NX24	2	26NX32		
	1.6234	1.7920									
1 3/4	1.7500	1.9371	1.7515	1	28NX16	2	28NX24	2	28NX32		
	1.7484	1.9381									
1 7/8	1.8750	2.0621	1.8765	1	30NX16	2	30NX24	2	30NX32	2	30NX36
	1.8734	2.0633									
2	2.0000	2.1871	2.0015	1	32NX16	2	32NX24	2	32NX32		
	1.9982	2.1883									
2 1/2	2.5000	2.6871	2.5015	1 1/2	40NX24	2	40NX32	3	40NX40		
	2.4982	2.6883									
3	3.0000	3.1875	3.0019	1 1/2	48NX24	2	48NX32	3	48NX40	3	48NX48
	2.9982	3.1889									

Lubrication Holes: Sizes 16NX and larger have a .3125 inch diameter hole; all other sizes have a .15625 inch diameter hole.

Length Tolerances: The length tolerance for all NX bearings is ± 0.010 inch.

Special Diameters and Lengths: NX bearings can be produced in any diameter from 1/2 inch to 30 inches or more, and up to 5 inches in length. Consult NPB for details.

NX INCH Thrust Washers



PART NUMBER	INSIDE DIAMETER d	OUTSIDE DIAMETER D	EFFECTIVE WALL THICKNESS T	DOWEL HOLE		HOUSING RECESS DEPTH R
				DIAMETER H	P.C. DIAMETER P.C.	
W08NX	.625	1.125	.0660	.099	.870	.040
	.635	1.115	.0625	.109	.880	.050
W10NX	.750	1.250	.0660	.099	.995	.040
	.760	1.240	.0625	.109	1.005	.050
W12NX	.875	1.500	.0660	.130	1.182	.040
	.885	1.490	.0625	.140	1.192	.050
W14NX	1.000	1.750	.0660	.130	1.370	.040
	1.010	1.740	.0625	.140	1.380	.050
W16NX	1.125	2.000	.0660	.161	1.557	.040
	1.135	1.990	.0625	.171	1.567	.050
W18NX	1.250	2.125	.0660	.161	1.682	.040
	1.260	2.115	.0625	.171	1.692	.050
W20NX	1.375	2.250	.0660	.161	1.807	.040
	1.385	2.240	.0625	.171	1.817	.050
W22NX	1.500	2.500	.0660	.192	1.995	.040
	1.510	2.490	.0625	.202	2.005	.050
W24NX	1.625	2.625	.0660	.192	2.120	.040
	1.635	2.615	.0625	.202	2.130	.050
W26NX	1.750	2.750	.0660	.192	2.245	.040
	1.760	2.740	.0625	.202	2.255	.050
W28NX	2.000	3.000	.0930	.192	2.495	.070
	2.010	2.990	.0895	.202	2.505	.080
W30NX	2.125	3.125	.0930	.192	2.620	.070
	2.135	3.115	.0895	.202	2.630	.080
W32NX	2.250	3.250	.0930	.192	2.745	.070
	2.260	3.240	.0895	.202	2.755	.080



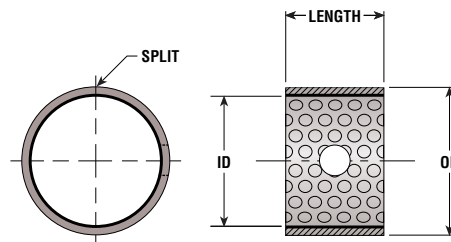
Tel: 800.426.8038

Fax: 425.222.5950

Email: sales@nationalprecision.com
www.nationalprecision.com

NX METRIC

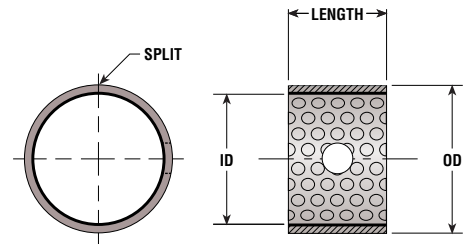
Up to 110 mm Bore



NOMINAL BEARING BORE	RECOMMENDED		INSTALLED BEARING ID*	BEARING LENGTH	PART NUMBER	BEARING LENGTH	PART NUMBER	BEARING LENGTH	PART NUMBER	BEARING LENGTH	PART NUMBER	BEARING LENGTH	PART NUMBER
	SHAFT DIA	HOUSING DIA											
10	10.000 9.978	12.000 12.018	4	10	MB1010NX	15	MB1015NX	20	MB1020NX				
12	12.000 11.973	14.000 14.018	4	10	MB1210NX	15	MB1215NX	20	MB1220NX				
14	14.000 13.973	16.000 16.018	4	15	MB1415NX	20	MB1420NX						
15	15.000 14.973	17.000 17.018	4	15	MB1515NX	20	MB1520NX	25	MB1525NX				
16	16.000 15.973	18.000 18.018	4	15	MB1615NX	20	MB1620NX	25	MB1625NX				
18	18.000 17.973	20.000 20.021	4	15	MB1815NX	20	MB1820NX	25	MB1825NX				
20	20.000 19.967	23.000 23.021	4	15	MB2015NX	20	MB2020NX	25	MB2025NX	30	MB2030NX		
22	22.000 21.967	25.000 25.021	6	15	MB2215NX	25	MB2225NX						
25	25.000 24.967	28.000 28.021	6	15	MB2515NX	20	MB2520NX	25	MB2525NX	30	MB2530NX		
28	28.000 27.967	32.000 32.025	6	20	MB2820NX	30	MB2830NX						
30	30.000 29.967	34.000 34.025	6	20	MB3020NX	25	MB3025NX	30	MB3030NX	40	MB3040NX		
35	35.000 34.961	39.000 39.025	6	20	MB3520NX	30	MB3530NX	35	MB3535NX	40	MB3540NX		
40	40.000 39.961	44.000 44.025	8	20	MB4020NX	30	MB4030NX	40	MB4040NX	50	MB4050NX		
45	45.000 44.961	50.000 50.025	8	20	MB4520NX	30	MB4530NX	40	MB4540NX	45	MB4545NX	50	MB4550NX
50	50.000 49.954	55.000 55.030	8	30	MB5030NX	40	MB5040NX	50	MB5050NX	55	MB5055NX	60	MB5060NX
55	55.000 54.954	60.000 60.030	8	30	MB5530NX	40	MB5540NX	50	MB5550NX	60	MB5560NX		
60	60.000 59.954	65.000 65.030	8	30	MB6030NX	40	MB6040NX	50	MB6050NX	60	MB6060NX		
65	65.000 64.954	70.000 70.030	8	40	MB6540NX	60	MB6560NX						
70	70.000 69.954	75.000 75.030	8	40	MB7040NX	50	MB7050NX	65	MB7065NX	80	MB7080NX		
75	75.000 74.954	80.000 80.030	10	40	MB7540NX	60	MB7560NX	80	MB7580NX				
80	80.000 79.954	85.000 85.035	10	40	MB8040NX	60	MB8060NX	80	MB8080NX				
85	85.000 84.946	90.000 90.035	10	40	MB8540NX	60	MB8560NX	80	MB8580NX				
90	90.000 89.946	95.000 95.035	10	40	MB9040NX	60	MB9060NX	80	MB9080NX	90	MB9090NX		
100	100.000 99.946	105.000 105.035	10	50	MB10050NX	80	MB10080NX	95	MB10095NX				
105	105.000 104.946	110.000 110.035	10	60	MB10560NX	80	MB10580NX	95	MB10595NX	110	MB105110NX		
110	110.000 109.946	115.000 115.035	10	60	MB11060NX	80	MB11080NX	95	MB11095NX	110	MB110110NX		

NX METRIC

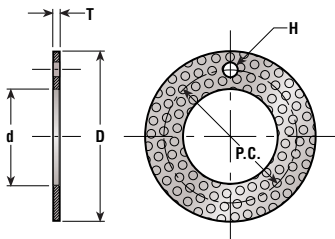
Over 110 mm Bore



NOMINAL BEARING BORE	RECOMMENDED		INSTALLED BEARING ID*	BEARING LENGTH	PART NUMBER	BEARING LENGTH	PART NUMBER	BEARING LENGTH	PART NUMBER	BEARING LENGTH	PART NUMBER	BEARING LENGTH	PART NUMBER
	SHAFT DIA	HOUSING DIA											
120	120.000	125.000	10	60	MB12060NX	80	MB12080NX	110	MB120110NX				
	119.946	125.035											
125	125.000	130.000	10	60	MB12560NX	110	MB125110NX						
	124.937	130.040											
130	130.000	135.000	10	50	MB13050NX	60	MB13060NX	80	MB13080NX	100	MB130100NX		
	129.937	135.040											
140	140.000	145.000	10	50	MB14050NX	60	MB14060NX	80	MB14080NX	100	MB140100NX		
	139.937	145.040											
150	150.000	155.000	10	50	MB15050NX	60	MB15060NX	80	MB15080NX	100	MB150100NX		
	149.937	155.040											
160	160.000	165.000	11	50	MB16050NX	60	MB16060NX	80	MB16080NX	100	MB160100NX		
	159.937	165.040											
170	170.000	175.000	11	50	MB17050NX	80	MB17080NX	100	MB170100NX				
	169.937	175.040											
180	180.000	185.000	11	50	MB18050NX	60	MB18060NX	80	MB18080NX	100	MB180100NX		
	179.928	185.040											
190	190.000	195.000	11	50	MB19050NX	60	MB19060NX	80	MB19080NX	100	MB190100NX	120	MB190120NX
	189.928	195.046											
200	200.000	205.000	11	50	MB20050NX	60	MB20060NX	80	MB20080NX	100	MB200100NX	120	MB200120NX
	199.928	205.046											
220	220.000	225.000	12	50	MB22050NX	60	MB22060NX	80	MB22080NX	100	MB220100NX	120	MB220120NX
	219.928	225.046											
240	240.000	245.000	12	50	MB24050NX	60	MB24060NX	80	MB24080NX	100	MB240100NX	120	MB240120NX
	239.928	245.046											
250	250.000	255.000	12	50	MB25050NX	60	MB25060NX	80	MB25080NX	100	MB250100NX	120	MB250120NX
	249.919	255.052											
260	260.000	265.000	12	50	MB26050NX	60	MB26060NX	80	MB26080NX	100	MB260100NX	120	MB260120NX
	259.919	265.052											
280	280.000	285.000	12	50	MB28050NX	60	MB28060NX	80	MB28080NX	100	MB280100NX	120	MB280120NX
	279.919	285.052											
300	300.000	305.000	12	50	MB30050NX	60	MB30060NX	80	MB30080NX	100	MB300100NX	120	MB300120NX
	299.919	305.052											

NX METRIC

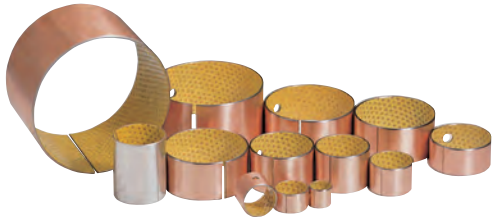
Thrust Washers



PART NUMBER	INSIDE DIAMETER		EFFECTIVE WALL THICKNESS	DOWEL HOLE	
	+0.25	-0.25		DIAMETER +0.4/+0.1	P.C. DIAMETER +0.12/-0.12
	d	D		T	H
MW10NX	12	24	1.5	1.5	18
MW12NX	14	26	1.5	2	20
MW14NX	16	30	1.5	2	22
MW16NX	18	32	1.5	2	25
MW18NX	20	36	1.5	3	28
MW20NX	22	38	1.5	3	30
MW22NX	24	42	1.5	3	33
MW24NX	26	44	1.5	3	35
MW26NX	28	48	1.5	4	38
MW30NX	32	54	1.5	4	43
MW36NX	38	62	1.5	4	50
MW40NX	42	66	1.5	4	54
MW46NX	48	74	2	4	61
MW50NX	52	78	2	4	65

NU & NX

Self-lubricating &
Pre-lubricated Bearings



Global Solutions on a National Level

8152 304th Ave. S.E.
PO Box 5012
Preston, WA 98050
Tel: (800) 426-8038
(425) 222-5900
Fax: (425) 222-5950

Email: sales@nationalprecision.com
Website: www.nationalprecision.com



Mechatronics Inc. is a leading manufacturing, distribution and contract manufacturing corporation with four operating groups. Mechatronics ISO 9001:2000 registered operating groups are respected by customers and vendors around the world. Our corporate diversification has enabled us to achieve consistent growth in all markets for over 25 years.



National Precision Bearing Group is a leading national supplier of precision miniature ball bearings, aircraft bearings and industrial bearings to a worldwide market. This group operates a class 1000 clean room and relubrication facility to support the needs of their aerospace, medical, dental, computer and industrial customer requirements.

Toll Free: 800 426 8038
Tel: 425 222 5900
Fax: 425 222 5950
www.nationalprecision.com



SilverThin Bearing Group is a USA manufacturer of thin section bearings for the high technology, industrial and distribution markets.

Toll Free: 866 294 5841
Tel: 425-222-5900
Fax: 425-222-7535
www.silverthin.com



Mechatronics Fan Group is a leading source of AC and DC axial cooling fans, fan assemblies and fan guards to the telecommunications, network equipment, office automation, medical and industrial markets.

Toll Free: 800 453 4569
Tel: 425 222 5900
Fax: 425 222 5155
www.mechatronics.com



Mechatronics Representative Group sells in specific US markets for Fujikura USA a world class manufacturer of cable assemblies, flexible printed circuitry, fiber optic cabling and heat dissipation devices to the computer and high technology industries.